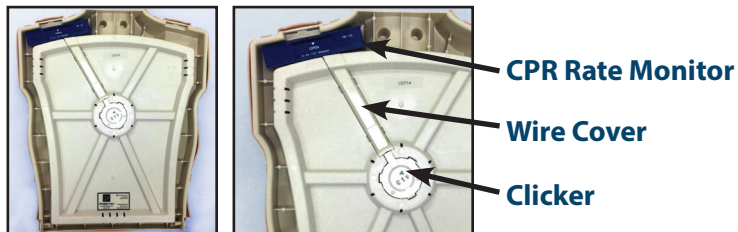




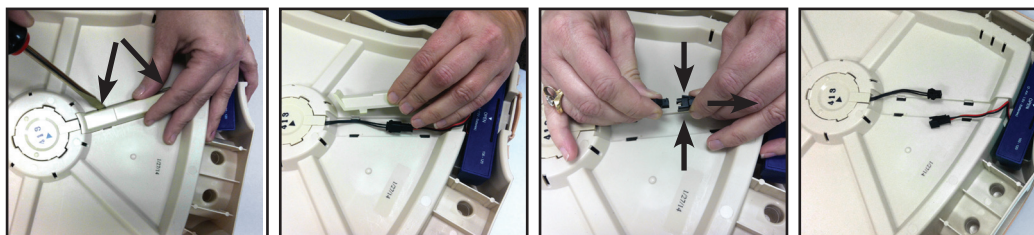
Prestan Professional Manikins

Replacing a Prestan Adult or Child CPR Rate Monitor

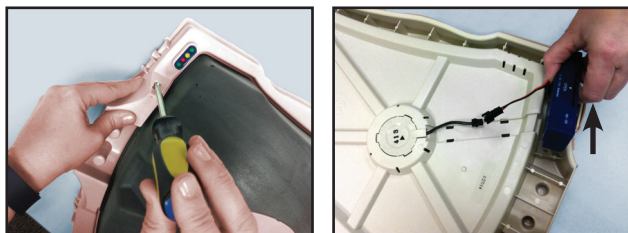
To replace the CPR Rate Monitor (Monitor) on the Adult/Child Manikin, you will need a small flat-head screwdriver and a small phillips-head screwdriver. **To facilitate the instruction procedure, please note the three parts shown at right:**



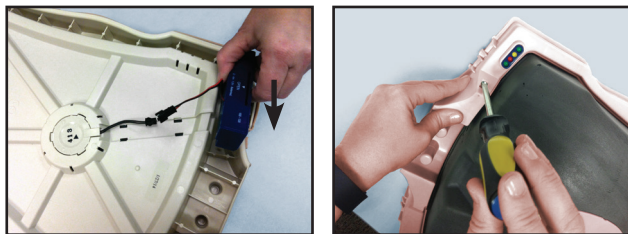
Remove the Wire Cover by gently inserting the flat-head screwdriver into the side slots and lifting upward until the cover easily pops off. Disconnect the Monitor from the Clicker by squeezing, then pulling apart the two wires at the connection.



Turn the manikin over and open the clamshell torso to expose the Monitor's lights. Using the phillips-head screwdriver, remove the front screw holding the Monitor in place. The Monitor will drop out of the backside of the manikin.



Insert the new CPR Rate Monitor into the back shoulder. The Monitor's LED lights should be visible through the front opening. Secure with screw in front.



Is your CPR Rate Monitor not BLUE?

BLUE is an upgrade to the Prestan CPR Rate Monitor. It includes an additional feature: a yellow warning light is flashed if the 120 compression upper limit is exceeded by the student (per the 2015 Guidelines).

Your existing Prestan Manikins can be easily updated with BLUE CPR Rate Monitors - Contact your Prestan authorized distributor for details!

Re-connect the Monitor and Clicker wiring. Replace the Wire Cover over the connected wires, being careful that all wiring is tucked in before snapping it in place.

